

HouseHampton

21 Houses for the 21st Century

Ron Papageorge Photographer
Toby Papageorge Editor

*Introduction by
Jonathan Morse*





TRUNZO BUILDING CONTRACTORS INC.

Wainscott, New York



Contemporary and sustainable architecture is stunningly exemplified by this ultra-modern residence on a pond on the east end of Long Island. Designed as a response to the site, the house seamlessly merges interior with exterior. Comprised of four one storey flat-roofed forms, the house sits within the site instead of on top of it creating a hierarchical layering of spaces. The windowless north side is a privacy wall to the road, yet affords a small glimpse through the house to the pond as you enter; the courtyard is a more intimate and private exterior space, while the south side opens the house up to the view of the pond and barrier beach. Windows and walls were carefully designed to frame specific views of the exterior as well as the artwork on the interior. The overall plan takes into account the very precise functional aspects of the client's lifestyle within the context of the modern design. Specific materials and details were used to give the spaces warmth, texture, and scale that compliment the artwork and the natural environment.

Pill-Maharam Architects (PMA) designed the home fusing creative ideas with functional, budgetary and programmatic requirements to craft a finely detailed sculptural space tailored to its specific environment. Their hands-on experience in construction and wealth of knowledge about sustainable strategies allowed PMA to meet the needs of the client, builder, budget, and site.

The client selected Trunzo Building Contractors, Inc. to build this contemporary residence because of the company's reputation for high quality workmanship and sustainable building practices. Now in its third generation, this family owned and operated business has been setting the standard for high-end custom residential projects in the Hamptons for almost 60 years. They combine their intimate knowledge of materials and techniques with the latest building science to produce residences that are as long-lasting and comfortable as they are beautiful. In order to achieve their unparalleled reputation for quality, they employ their own carpenters in addition to operating their own millwork and cabinetry shop. This enables them to produce custom architectural woodwork and casework including rare wood paneling, compound mouldings, doors, and a complete range of cabinetry, built-ins, and furniture. Adherence to Trunzo standards results in a consistency of execution that is visibly superior and of proven durability.



Above: A spacious garden court adjoins the main house, the solar-heated pool and the guest wing creating a very tranquil setting.



The guest wing is an inviting summertime retreat, providing private access to the solar-heated pool and to the studio beyond.



Above: The main entrance path has views through to the water and is lined by a gallery of art.



Above: Sunset casts a golden glow over the perfectly situated residence and the sweeping lawns on the waterside.



77 Above: The waterview entrance is framed with greenery and guarded by a sentinel.



Above: The Foyer contains a full wall of 2" thick European glass which connects the exterior to the interior space.



Above: A view portraying the open flow between the Entry Foyer and the Living Room and natural light from the transom windows above.



The neutral modern decor throughout the interiors perfectly complements the art collection and the architecture. The immense Great Room is so beautifully proportioned that it retains intimate gathering spaces while connecting to the outdoors through the oversized insulated, laminated, low emissivity, glass walls.



Above: Appealing visual lines of the custom-built cabinets made of rift-sawn white oak, with the glass wall opening to the water views.



Above: Double kitchen islands provide tremendous counter space and storage, and glass walls connect with views of the pool and the natural environment beyond.



Above: The panoramic view of the water is enjoyed through the specially made, oversized 2" thick glass walls that preserve the natural environment.



is laminated glass features minimal deflection at high wind speeds and filters UV light in order to collection.



Above: The Master Bedroom overlooks the pond, sweeping lawns and nearby natural vegetation.



Above: The Master Bath is secluded but open to nature.



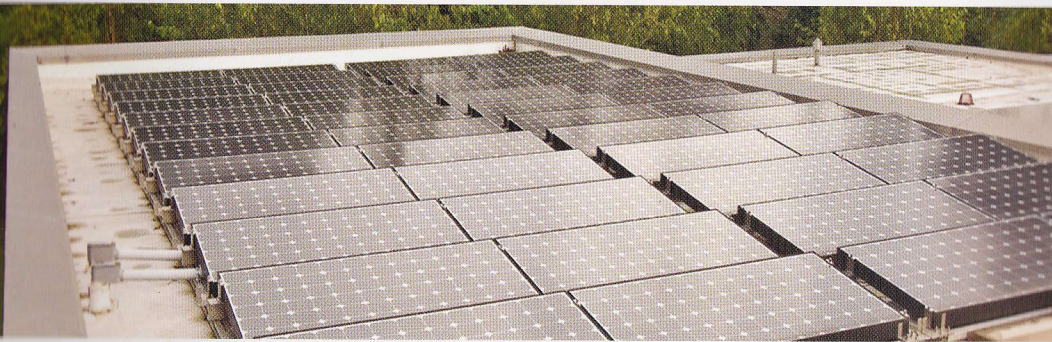
Above: Pastoral pond views portray the peace and tranquility of the idyllic location as well as showing how the home merges the interior and the exterior worlds.



Beautiful Village home in the Hamptons



Oceanfront home on the East End of Long Island



21st Century Design Attributes and Materials

Passive solar design: southern glass allows for the sun to penetrate the interior and heat the space in the winter, while the overhang provides shade in the summer.

Locally sourced bluestone flooring and exterior paving throughout.

All walls from below grade roof built with recycled content insulated concrete forms.

Swiss made glass is triple pane, hurricane rated.

House was built on a pre-developed site.

House and landscape were designed to protect the wetland surroundings.

Ground source heat pumps used for cooling (also known as geothermal).

Compact fluorescent lighting.

100% day lighting to all living spaces.

10Kw Photovoltaic array: provides the majority of the electricity for lighting, appliances, plug loads, and air conditioning.

Trunzo

Building Contractors, Inc.

382 Montauk Highway Suite 1

Wainscott, New York 11975

Pat J. Trunzo III, President

T 631-324-5025 F 631-537-6511

Email pat3@optonline.net

www.trunzobuilding.com